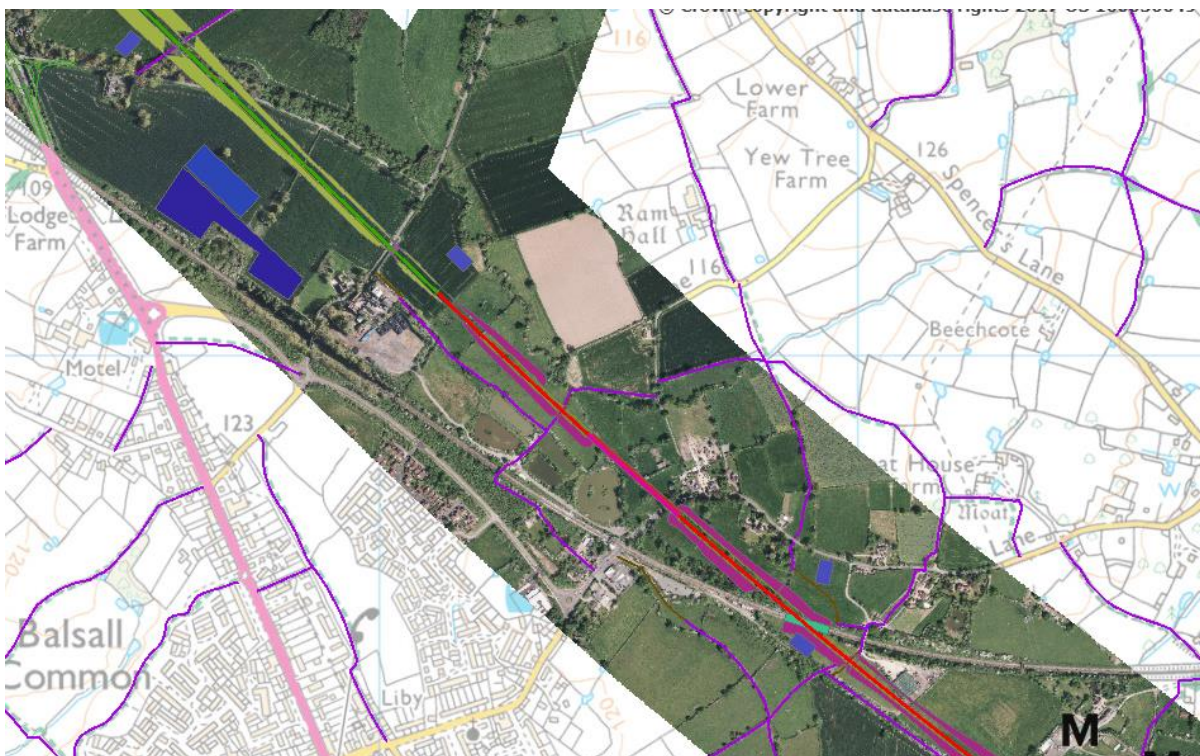


# Berkswell Haul Route – update



**Document no: 1MC08-BBV-ER-NTE-N001-000001**

Revision	Author	Reviewed by	Date	Reason for revision
Rev01	A de Bell	S Bridges	13/02/2019	First issue
Rev02	A de Bell	S Bridges	15/02/2019	Minor correction

**Berkswell Haul Route – update**

Document no: 1MC08-BBV-ER-NTE-N001-000001

**Revision:** Rev02

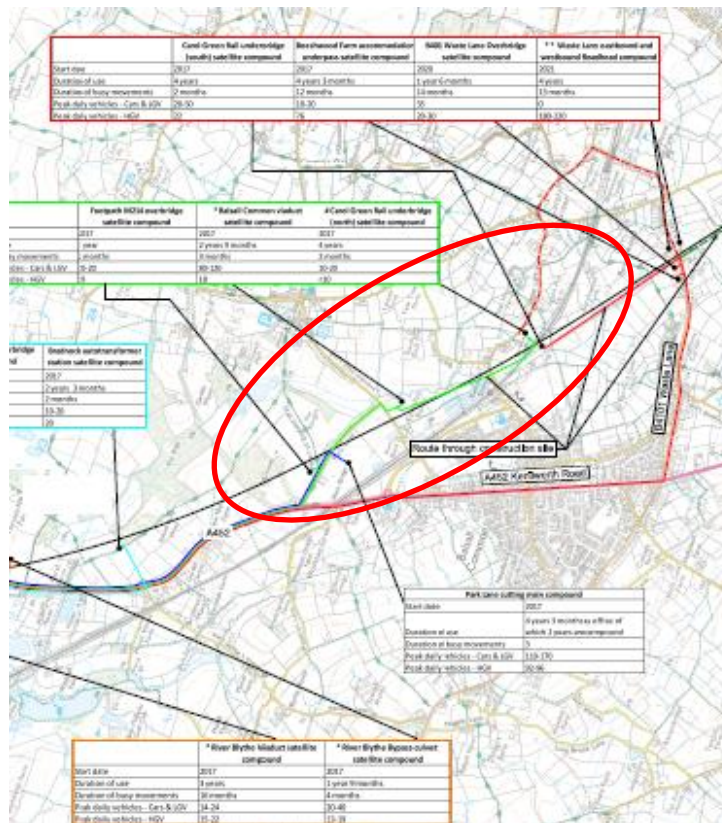
# Contents

<b>1</b>	<b>Introduction</b>	<b>1</b>
<b>2</b>	<b>Delivery Routes and Haul Routes</b>	<b>2</b>
<b>3</b>	<b>Berkswell Continuous Haul Route</b>	<b>3</b>
<b>4</b>	<b>Alternative Route during Haul route Construction</b>	<b>6</b>

# 1 Introduction

This short note explains how Balfour Beatty Vinci will establish a continuous haul route in the Parish of Berkswell.

The Hybrid Bill Environmental Statements envisaged a Haul Route through the area:



Balfour Beatty Vinci plan to establish a Haul Route. There are restrictions that make doing this difficult, such as:

- The land areas we must work within
- Network Rail’s procedure for work near and over existing railways
- The amount of work required
- The timeframe of the construction programme
- The road routes available prior to a Haul route being established

This update reflects current progress with plans for the haul route. Balfour Beatty Vinci is still working on its plans and it is likely that details will change. We will work to keep the community updated about changes and developments over the forthcoming months.

## 2 Delivery Routes and Haul Routes

**Haul Routes** are private road/routes within the construction area that are used to move people, plant, equipment, excavated materials and new material around the site and on or off it.

**Haul routes** are Balfour Beatty Vinci's preferred routes as they avoid interfering with the road network and provide the greatest possible control over activity. We are working to make the greatest possible use of them. Haul routes will have been referred to in the Environmental Statement rainbow maps.

Many Haul routes require structures to be created first for them to be effective. Our planning reflects this requirement.

Where haul routes cross roads, bridleways and public footpaths controls will be put in place to ensure public safety.

**Delivery Routes** are the permitted public road routes we use to bring materials, etc. to sites and compounds and to remove surplus material from the construction area. Traffic Management Plans are developed and approved with Local Authorities for delivery routes. These routes will have been identified in the Environmental Statement rainbow maps. It will always be necessary for the road network to be used to allow materials and equipment to be delivered to sites and compounds.

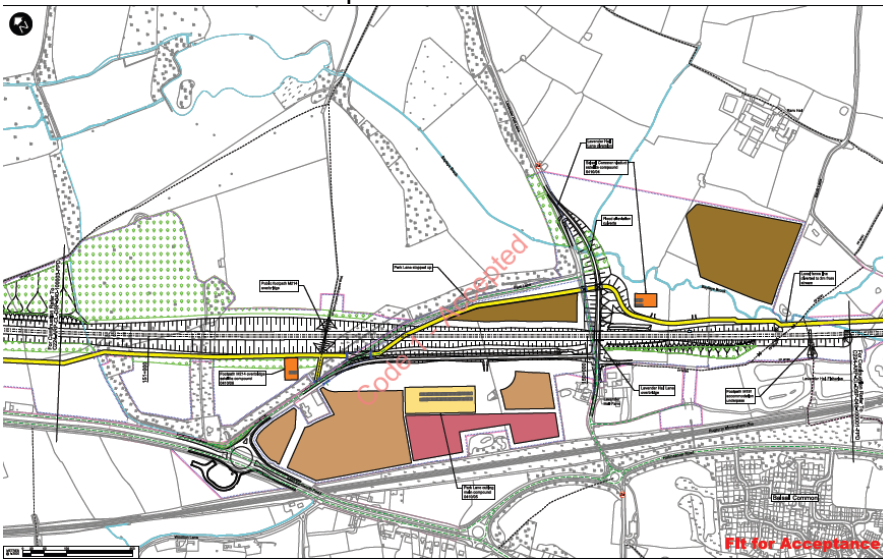
Until **Haul Routes** within the construction area can be established delivery routes and the road network will be used.

### 3 Berkswell Continuous Haul Route

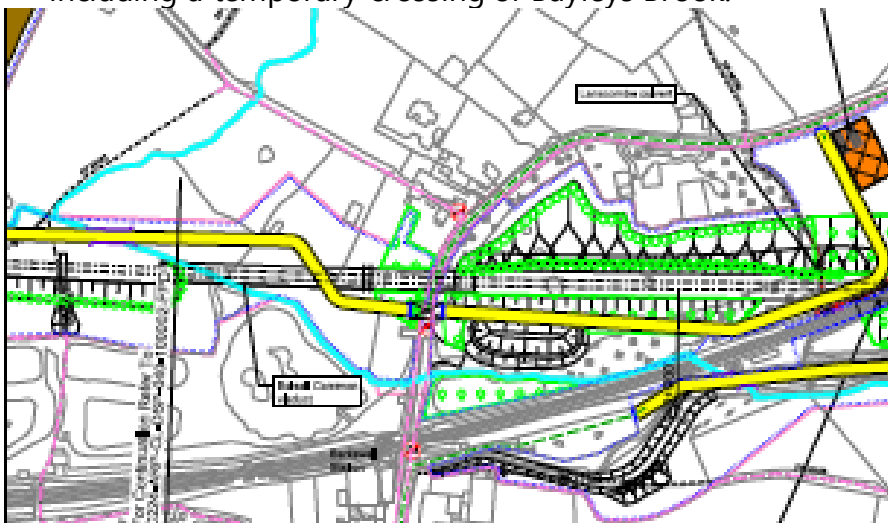
Balfour Beatty Vinci plan to establish a continuous haul route through Berkswell Parish as rapidly as it can once construction starts. The topography, structures to be built and existing infrastructure make working in the area complex.

The following steps will lead to the continuous Haul Route being created:

1. Establish Park Lane Compound of the A452



2. Create a haul route from Park Lane Compound to Truggist Lane/Truggist Hill including a temporary crossing of Bayleys Brook.

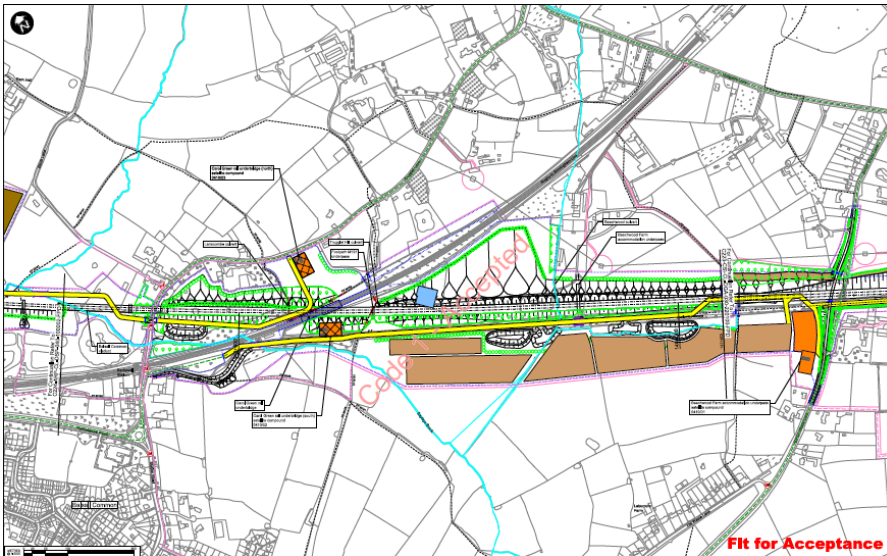


**Berkswell Haul Route – update**

Document no: 1MC08-BBV-ER-NTE-N001-000001

Revision: Rev02

3. Create a haul route between Waste Lane and Berkswell Station car park area



4. Construct the permanent crossing of West Coast Main Line by late-2021



These steps will enable a continuous route through the Parish by the end of 2021. Network Rail have understandably strict procedures for work around the railways it is responsible for. It typically takes 18-months to agree a possession. Concentrating on using a rail possession that is currently being finalised to build the crossing of the permanent West Coast Main Line is the fastest way of setting up a continuous haul route in the area.

Whilst the above are established it is necessary to use permitted highway routes for vehicle movements to support construction work. These routes are:

- A452 Kenilworth Road
- Kelsey Lane and Waste Lane
- Truggist Lane

These are all busy roads and not all of them are ideal for construction traffic, so Balfour Beatty Vinci has looked an alternative. The alternative is explained in the next section of the update.

Balfour Beatty Vinci will be accessing the Truggist Lane and Hill area from land within the limits defined by the Act. This will include establishing a temporary crossing of Bayleys Brook and a managed crossing of Truggist Lane

The managed crossing is most likely to be traffic-light controlled. Its operation will be managed and will take account of the commuter peaks associated with Berkswell Station.

As an indication the haul route to the Bayleys Brook area will see some 400 movements per day at its peak and the crossing of Truggist Lane will have some 50 movements per day (circa 5 per hour).

Either side of Truggist Lane there are complex construction activities taking place in limited areas:

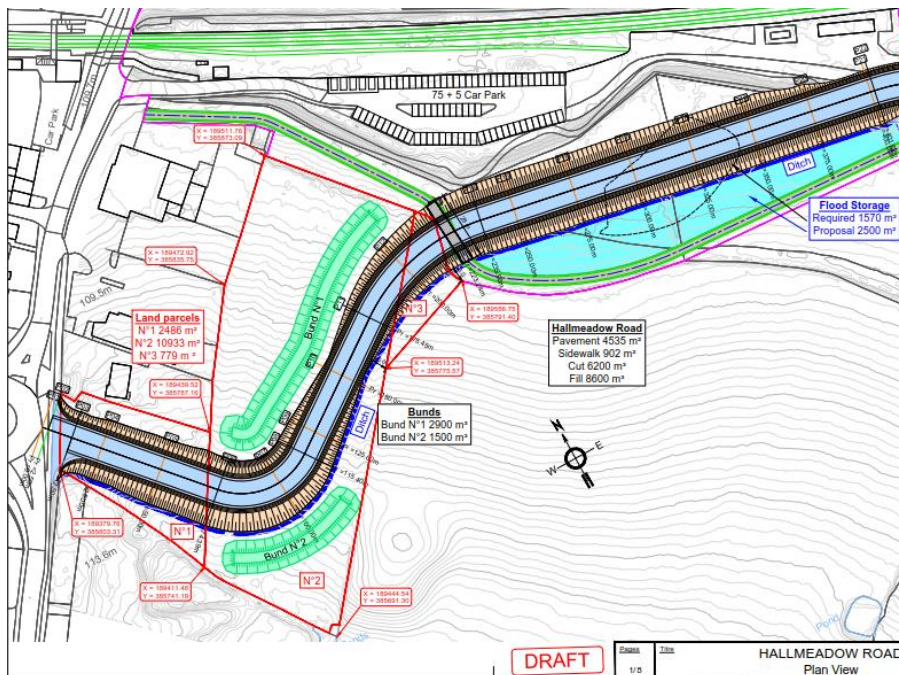
- Drainage and flood mitigation
- Piling
- Viaduct pier construction
- Viaduct construction
- Abutments
- Embankments
- Material lay down and movement areas

The working area available to Balfour Beatty Vinci is in places only 80m wide and a typical safe construction haul route is 12m wide. With the limited land space available it is important for the programme of works to only have vehicle movement that support the immediate area moving through it. This will help in ensuring safe and productive construction.



## 4 Alternative Route

To avoid the use of less desirable roads Balfour Beatty Vinci has developed a potential alternative. This route uses Hallmeadow Road along with the construction of a small section of private road from the roundabout where Hallmeadow Road meets Station Road. This private section of road will link with the Haul Road from Waste Lane. The short section of road will pass Annora House and travel behind it, the British Legion and Unity Garage. The diagram below is an indicative layout of this connection:



It is expected that Hallmeadow Road will see up to 350/400 HGV movements per day during its peak use in 2020 and 2021. After this time and for the remainder of the programme volumes should drop to between 40 and 80 HGV per day as the Haul Route will take the bulk of traffic.

There will still be some utilisation of the A452 in Balsall Common, which is likely to be up to 80 HGV per day. Kelsey Lane and Waste Lane are likely to see up to 80 HGV per day, although efforts will continue to be made to minimise this yet further. Construction planning and traffic planning are still being worked on, so these volumes are yet to be finalised and may change. The A452 is a delivery route for the project and will still be used extensively outside the Berkswell and Balsall Common Parishes.

The use of such an alternative is attractive because it relieves traffic from the very busy congested A452 and the less desirable Kelsey and Waste Lane. It will not in itself reduce the volume of traffic on the road, although there will be a reduction in the distance that Balfour Beatty Vinci vehicles travel on public highways overall.

## **Berkswell Haul Route – update**

Document no: 1MC08-BBV-ER-NTE-N001-000001

**Revision:** Rev02

Balfour Beatty Vinci is aware that this alternative will have an impact the residents of Annora House and those living on Hallmeadow Road. We will explore options to mitigate if possible.

This alternative will require a Town and Country Planning Act Planning Application as it is outside the land limits that the Act permits. Such an application will be subject to a consultation in the normal way.

As well as constructing the section of haul road and altering egress from the roundabout on Station Road other needs are being included in the development of the alternative route:

- Additional Car Parking at Berkswell Station (current assessment indicates 40-50, but this will be finalised in any planning application)
- Introducing parking restrictions along Hall Meadow Road
- Removing speed humps along Hall Meadow Road
- Pedestrian safety at the crossing of the junction between Hallmeadow Road and Station Road.
- Medical Centre access.
- Yellow lining on Riddings Hill
- Signage and information to encourage parking at the Station

# Keeping you informed

We are committed to keeping you informed about work on HS2. This includes ensuring you know what to expect and when to expect it, as well as how we can help.

## Residents' Charter and Commissioner

The Residents' Charter is our promise to communicate as clearly as we possibly can with people who live along or near the HS2 route. [www.gov.uk/government/publications/hs2-residents-charter](http://www.gov.uk/government/publications/hs2-residents-charter)

We also have an independent Residents' Commissioner whose job is to make sure we keep to the promises we make in the Charter and to keep it under constant review. Find reports at: [www.gov.uk/government/collections/hs2-ltd-residents-commissioner](http://www.gov.uk/government/collections/hs2-ltd-residents-commissioner)

You can contact the Commissioner at: [residentscommissioner@hs2.org.uk](mailto:residentscommissioner@hs2.org.uk)

## Construction Commissioner

The Construction Commissioner's role is to mediate and monitor the way in which HS2 Ltd manages and responds to construction complaints. You can contact the Construction Commissioner by emailing: [complaints@hs2-cc.org.uk](mailto:complaints@hs2-cc.org.uk)

## Property and compensation

You can find out all about HS2 and properties along the line of route by visiting:

[www.gov.uk/government/collections/hs2-property](http://www.gov.uk/government/collections/hs2-property)

Find out if you're eligible for compensation at:

[www.gov.uk/claim-compensation-if-affected-by-hs2](http://www.gov.uk/claim-compensation-if-affected-by-hs2)

## Holding us to account

If you are unhappy for any reason you can make a complaint via the helpline. For more details on our complaints process, please visit our website:

[www.hs2.org.uk/how-to-complain](http://www.hs2.org.uk/how-to-complain)

## Contact Us

If you have any questions about this notification of works, please get in touch.



24/7 Freephone **08081 434 434**



@ Minicom **08081 456 472**

Email **[HS2enquiries@hs2.org.uk](mailto:HS2enquiries@hs2.org.uk)**

Write to:

**FREEPOST**

**HS2 Community Engagement**

Website **[www.hs2.org.uk](http://www.hs2.org.uk)**

To keep up to date with what is happening in your local area, visit:

**[www.hs2.commonplace.is](http://www.hs2.commonplace.is)**

**Please contact us if you'd like a free copy of this document in large print, Braille, audio or easy read. You can also contact us for help and information in a different language.**

HS2 Ltd is committed to protecting personal information. If you wish to know more about how we use your personal information please see our Privacy Notice

**Berkswell Haul Route – update**

Document no: 1MC08-BBV-ER-NTE-N001-000001

**Revision:** Rev02

High Speed Two (HS2) Limited, registered in England and Wales.

Registered office: Two Snowhill, Snow Hill Queensway, Birmingham B4 6GA.

Company registration number: 06791686. VAT registration number: 181 4312 30.